

ACCORDION LESSONS – LESSON 6

14

IMPORTANT: To gain the greatest measure of musical progress and pleasure, practice daily the full amount recommended by your instructor.

Only through consistent daily application can the necessary muscular control and finger dexterity be achieved.

Remember that *there is no substitute for practice!*

Deck the Halls

Welsh Carol



Deck the halls with boughs of hol - ly,

Fa la la la la la la la la; etc.

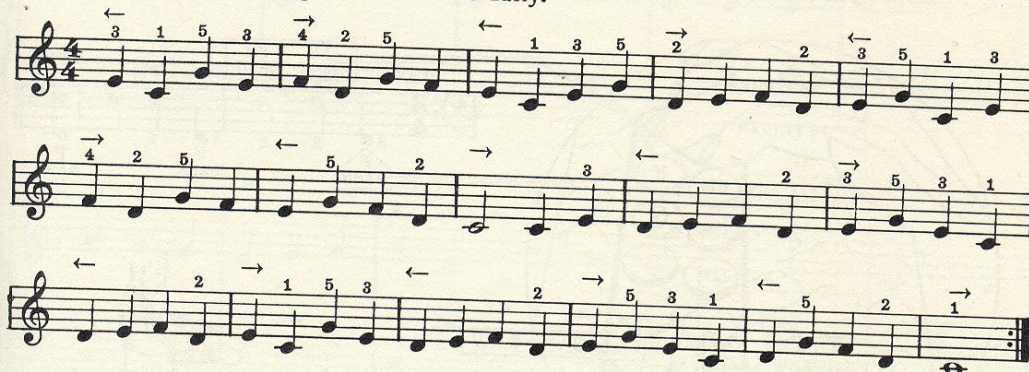
'Tis the sea - son to be jol - ly.

Fa la la la la, la la la la!

The musical score for "Deck the Halls" is presented in four systems, each with a treble and bass staff. The key signature has one flat (B-flat), and the time signature is 4/4. Fingerings are indicated by numbers 1-5 above notes. Hand directions (left and right arrows) are shown above the treble staff. Chord markings "CM" (Chord Melody) and "GM" (Grand Melody) are placed above the bass staff. The lyrics are written below the treble staff. The first system ends with a repeat sign. The second system ends with "etc.". The third system ends with a repeat sign. The fourth system ends with a double bar line.

15
PLAYING BY TOUCH. The fingertips should rest lightly on the keys at all times. This will eliminate the need for glancing at the keyboard to find the next required key. Determine your position on the keys by *TOUCH*.

WARM UP, play through several times daily.



Hi Lee, Hi Low

Country Dance

