

ACCORDION LESSONS – LESSON 30

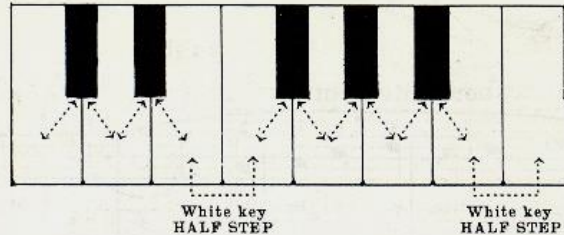
30

28

HALF STEPS and WHOLE STEPS

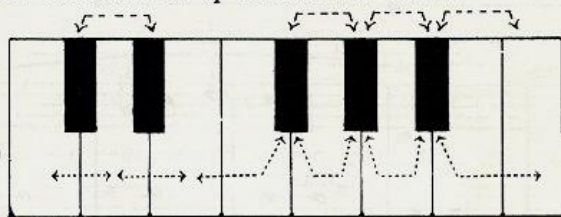
A HALF STEP is the distance between any treble key and the next nearest key up or down, black or white.

Progression in
HALF STEPS
(No key between)



A WHOLE STEP is made up of two HALF STEPS.

Progression in
WHOLE STEPS
(One key in between)

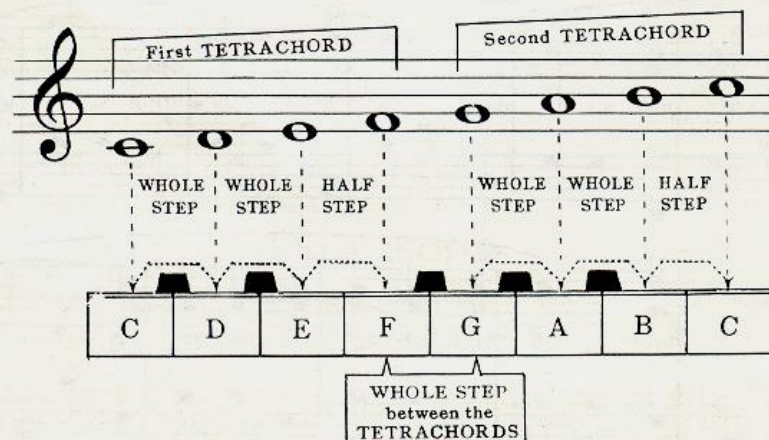


Building the MAJOR SCALE

The MAJOR SCALE is made up of eight tones in alphabetical order.

As shown below, the MAJOR SCALE is composed of two, similar four note groups called TETRACHORDS, each TETRACHORD having the same pattern; WHOLE STEP-WHOLE STEP-HALF STEP.

The
C MAJOR
SCALE



Building the G MAJOR SCALE

29

Note that F is sharpened to maintain the HALF STEP at the end of the second TETRACHORD

The G MAJOR SCALE

First TETRACHORD

Second TETRACHORD

WHOLE STEP, WHOLE STEP, HALF STEP

WHOLE STEP, WHOLE STEP, HALF STEP

WHOLE STEP between the TETRACHORDS.

G A B C D E F G

The G Major Scale

(Memorize)

Play several times daily.

Garryowen

Brightly

Irish Folk Dance

mf

GM

DM

GM

DM

GM