

44

78 quiz

Each note of a SCALE is numbered. What are the numbers called?

What is a HALF STEP? A WHOLE STEP?

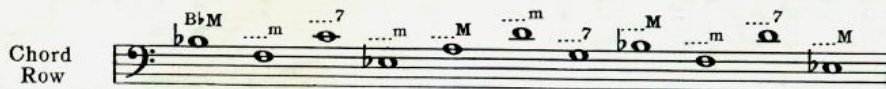
How is the MAJOR CHORD formed?

The capital letter M indicates the _____ Row of Basses.

The small letter m indicates the _____ Row of Basses.

The figure 7 indicates the _____ Row of Basses.

Write on the dotted lines the letter names of the following basses:



How many counts are there in each measure in $\frac{3}{4}$ time?

In $\frac{3}{8}$ time?

In $\frac{4}{4}$ time?

In $\frac{6}{8}$ time?

In $\frac{2}{4}$ time?

Write on the dotted lines the *kind* of note and the time value of each in $\frac{4}{4}$ time.

Quarter

| Note | Note | Note | Note | Note | Note | Note | Note |
|-------|--------|-------|--------|--------|-------|-------|-------|
| | | | | | | | |
| Count | Counts | Count | Counts | Counts | Count | Count | Count |

Write the number of counts in $\frac{3}{8}$ or $\frac{6}{8}$ time for each of the following notes:

| | | |
|--------|-------|--------|
| | | |
| Counts | Count | Counts |

Play the ROOT POSITION, FIRST INVERSION and SECOND INVERSION of the following MAJOR CHORDS:

G : B \flat : F : D : A : C : E \flat

ANSWERS ON NEXT PAGE:

78 quiz

FINAL QUIZ

Each note of a SCALE is numbered. What are the numbers called? DEGREES

What is a HALF STEP? A WHOLE STEP?
 HALF STEP A SEMI-TONE DIFF --- WHOLE STEP FULL TONE DIFF

How is the MAJOR CHORD formed? 1ST - 3RD - 5TH DEGREES

The capital letter M indicates the MAJOR Row of Basses.

The small letter m indicates the MINOR Row of Basses.

The figure 7 indicates the 7TH Row of Basses.

Write on the dotted lines the letter names of the following basses:

Chord Row

Solo Row

How many counts are there in each measure in $\frac{3}{4}$ time? 3

In $\frac{3}{8}$ time? 3 In $\frac{4}{4}$ time? 4 In $\frac{6}{8}$ time? 6 In $\frac{2}{4}$ time? 2

Write on the dotted lines the *kind* of note and the time value of each in $\frac{4}{4}$ time.

| Quarter | Dotted half | 1/8th | Dotted 1/4 | Whole | 1/16th | Half | Dotted 1/8th |
|---------|-------------|-------|------------|--------|--------|-------|--------------|
| Note | Note | Note | Note | Note | Note | Note | Note |
| | | | | | | | |
| 1 | 3 | 1/2 | 1 1/2 | 4 | 1/4 | 2 | 3/4 |
| Count | Counts | Count | Counts | Counts | Count | Count | Count |

Write the number of counts in $\frac{3}{8}$ or $\frac{6}{8}$ time
 for each of the following notes:

3 Counts 1 Count 2 Counts

Play the ROOT POSITION, FIRST INVERSION and SECOND INVERSION of the following MAJOR CHORDS:

G : G-B-D Bflat : Bflat-D-F F : F-A-C D : D-F#-A A : A-C#-E Eb : Eb-G-Bflat

A = A-C#-E C = C-E-G Eb = Eb-G-Bflat